

Stable Vice

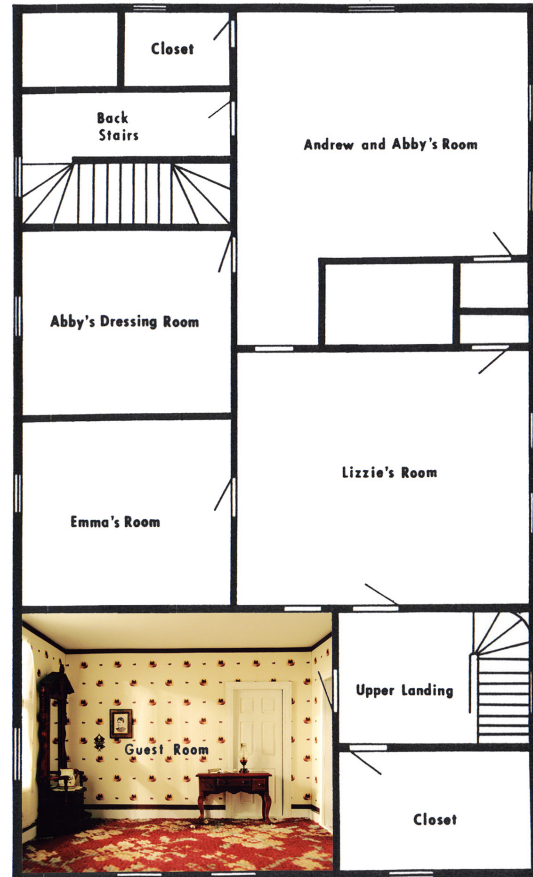
Samantha Small

'**Stable Vice**' - a term used to describe repetitive, purposeless and destructive behaviour displayed by horses kept locked up for extended periods without exercise or social interaction.

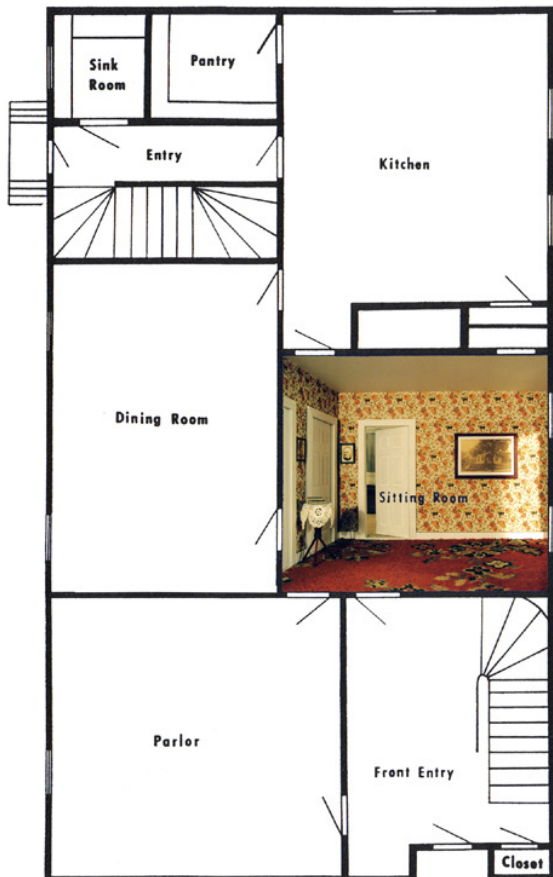
*Lizzie Borden took an axe
And gave her mother forty whacks
When she saw what she had done
She gave her father forty-one*

What lies beyond the frame here is a horrific domestic crime, now legendary for the gruesome manner in which it was executed and for the fact it remains unsolved to this day.

The murders of Andrew and Abby Borden – supposedly by Lizzie – have entered deep into the popular imagination, as evidenced by the nursery rhyme sung by generations of schoolchildren.



1st floor of Borden Residence



2nd floor of Borden Residence

Based on details of photographs and floorplans of the house in which the murders took place, the images in this exhibition share in the popular fascination with notorious crimes as a form of film noir fiction.

The rooms in which the murders occurred are re-constructed and imagined here as a series of psychic tableaux, in which clues are literally embedded in the scenes represented.

Like the crime itself, these obsessive and over-elaborated constructions suggest a form of 'stable vice' found deep within the confines of home.